



Making Leoku Street Safer with Asphalt Art

Justin Menina and Abbey Seitz - February 22, 2024





Who We Are

Better Block Hawai'i is a 501(c)3 nonprofit organization focused on improving Hawai'i's neighborhoods through placemaking projects and civic engagement.

Leoku - Leolua Street: An Unsafe Crossing

- Tier-1 High Pedestrian Injury Intersection
- Low pedestrian yield rate
- 5,000 vehicular traffic per day
- 35 MPH speed limit
- Adjacent to Hō'ae'ae (West Loch) Skyline Station



Project Goals

Improve safety on Leoku Street by:

- Increasing visibility of pedestrians
- Decreasing pedestrian crossing distances
- Lowering vehicle speeds



Asphalt Art Grant

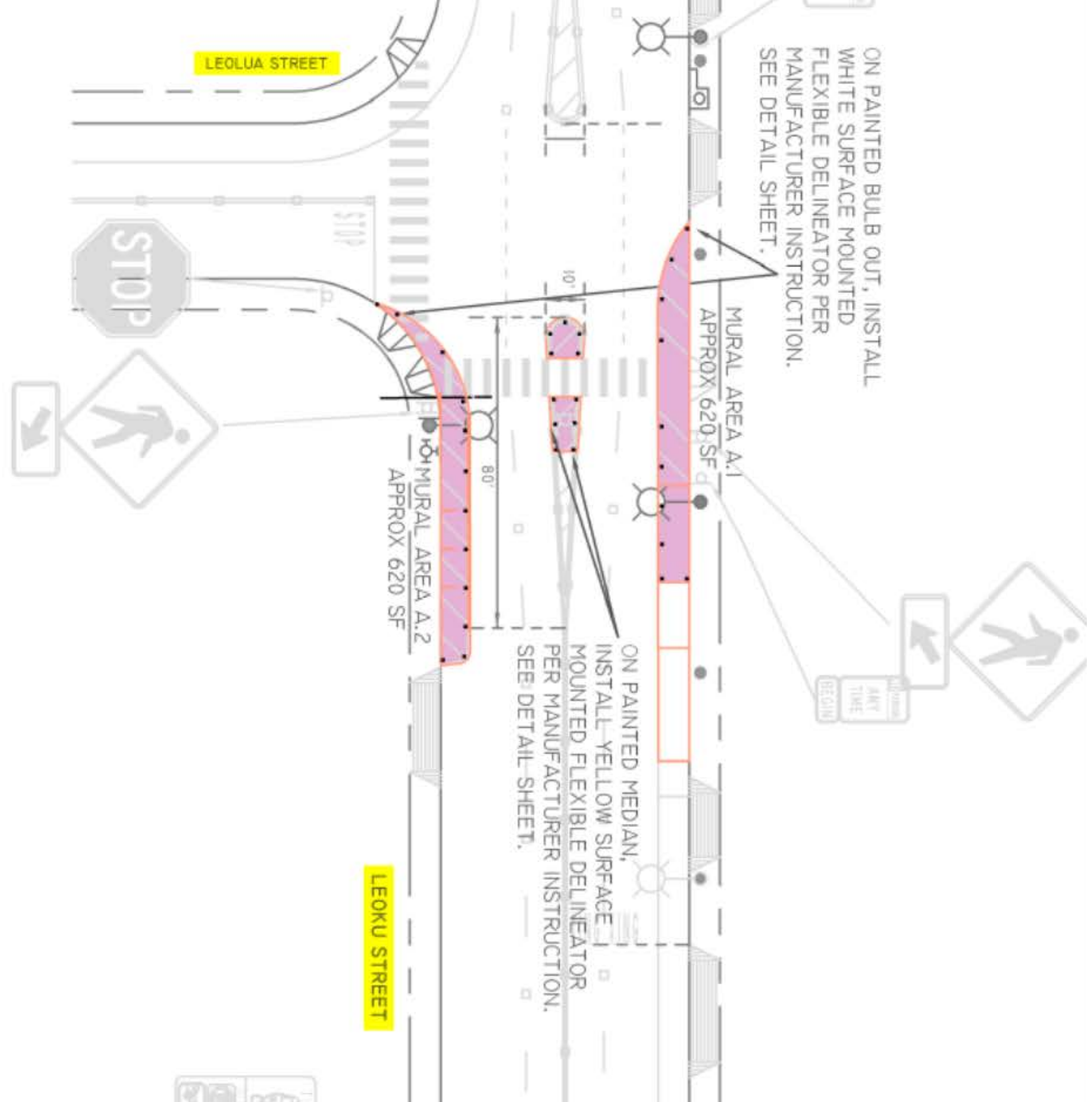
- In November 2023, Honolulu was awarded Bloomberg Philanthropies Asphalt Art Grant for the first time
- Grant is designed to fund visual art on roadways, pedestrian spaces, and public infrastructure to showcase low-cost solutions to improve safety



Leoku & Leolua Street Proposed Improvements

- Protected Curb Extensions
- Pedestrian Refuge Island

Existing Conditions



Pedestrian Refuge Island at Ala Ilima St

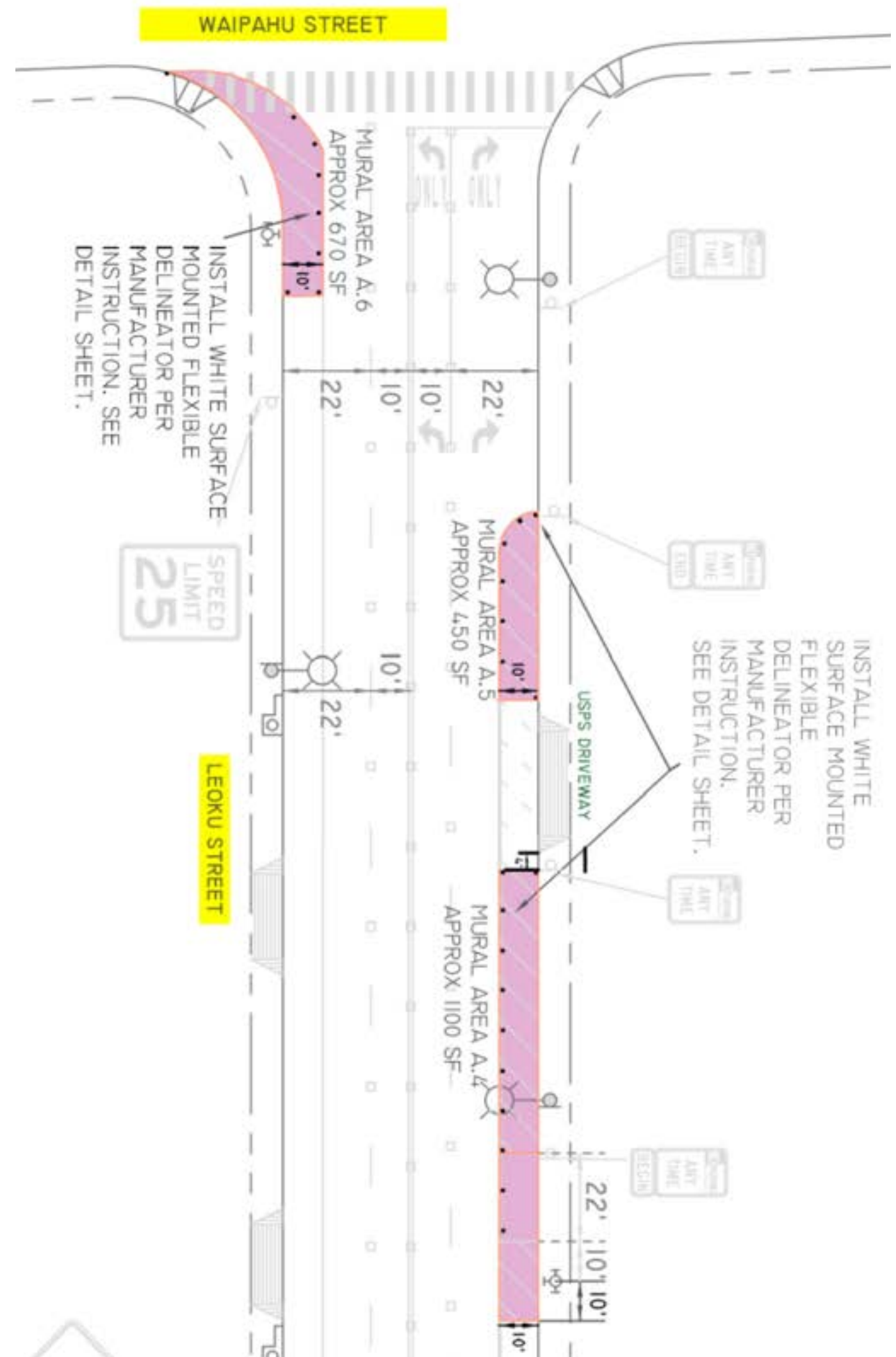


Credit: Department of Transportation Services

Waipahu & Leoku Street Proposed Improvements

- Protected Curb Extensions

Existing Conditions



Examples of Painted Curb Extensions in Hawaii



2024 Timeline

JAN-FEB

MAR

APR-MAY

JUN-JUL

AUG

SEPT



.....
**COMMUNITY
ENGAGEMENT**

**PRE-DATA
COLLECTION**

**STREET
USE
PERMIT**

**POST-DATA
COLLECTION**

Questions + Comments

Better Block Hawaii

Contact Us!

Website

www.betterblockhawaii.org

Email Address

info@betterblockhawaii.org

Instagram

[@betterblockhawaii](https://www.instagram.com/betterblockhawaii)